



# YachtProjectsInternational



## **YACHTPROJECTS US**

1532 SW 13th Court  
Pompano Beach, FL 33069  
UK Tel. +44 203 670 1765  
US Tel. +1 954 398 1846  
office@yachtprojects.net

## **YACHTPROJECTS UK**

8B, Funtley Court  
19 Funtley Hill  
Fareham, Hants, PO16 7UY  
UK Tel. +44 203 670 1765  
office@yachtprojects.net

## **SHIPYARD**

Wharf Road,  
Penzance, Cornwall  
TR18 4BW, UK

For examples of our work and more information, please visit  
[www.yachtprojects.net](http://www.yachtprojects.net) or contact us via one of the ways  
listed above. New business enquiries please contact

**Pippa Nicholas:**

US Mobile +1 912 695 2449 / UK Mobile +44 788 951 3159  
[pippa@yachtprojects.net](mailto:pippa@yachtprojects.net)

[www.yachtprojects.net](http://www.yachtprojects.net)

## **SHIPYARD AND DRYDOCK SERVICES**



**REFIT, REPAIR, CONVERSION  
AND CLASS-APPROVED TESTING  
FOR VESSELS UP TO 75M**

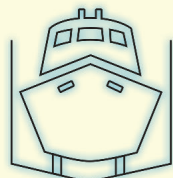


YachtProjectsInternational

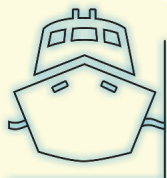


Since 1834, the marine engineers at Europe's oldest dry dock have been known for their outstanding attention to detail, good humour and sound, down-to-earth advice. Perfectly located at the UK's south western tip, YachtProjects International is fully equipped for all kinds of marine engineering, with an experienced team and skilled contractors on hand.

## OUR FACILITIES



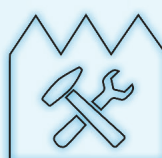
**DRY DOCK**  
75m X 12m



**WET BERTH**  
106m



**DRY-OUT BERTH**  
92m



**INDOOR WORKSHOP**  
50m x 42m

### MARINE FACILITIES

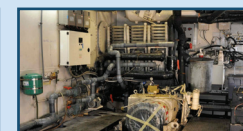
Filters Workshop  
22m x 20m Undercover Welding, Fabrication and Sheet Metal Workshop  
Electrical Workshop  
Joiners Workshop  
Upholstery Workshop  
Fuel Injection Workshop  
Blacksmiths Workshop  
Clean room Workshop (Dedicated to Engine rebuilds and Hydraulic repairs)

### ENGINEERING FACILITIES

Profiling Facility: 8mx3m sheets up to 150mm thick  
Oxy Propane and Plasma  
Large secure store facility  
Portable welding equipment (TIG, MIG, MMA)

### PAINTING

UHP Cleaning, Mechanical Preparation of Hull, Full Anti-Foul Service, Hulls and Deck House to Yacht Standard Finish



## MARINE SERVICES

### REPAIR, REFIT AND CONVERSION

We enjoy working with the owners and crew of boats, ships and yachts of all sizes to create just the right answer for every challenge. With fully-equipped workshops and local, hand-selected contractors on standby, we manage your whole project to MCA, Lloyds and ISO9001:2008 standards.

### MARINE ENGINEERING

In particular, we specialise in overhauling propulsion and steering gear, ballast and bilge systems, and deck machinery – to all the relevant quality standards. We're never happier than working with an engine; repairing a windlass, winch or capstan; or refurbishing a tail shaft.

### HULL AND STEELWORK REPAIRS

Whether working in mild steel, stainless steel or aluminium, all our repair and fabrication work is carried out by fully Lloyds-coded welders – and that extends to all our non-structural, shell plate, tank, pipe and vacuum-tested processes. Naturally, we're always happy to have our work inspected by a surveyor or third party.

### COST EFFECTIVE ANNUAL, 5 & 10 YEAR SURVEYS

Inspections, including stability calculations and testing, anchor chain calibration, engine crank deflection, and class-approved thickness and non-destructive testing. We also carry out air and water pressure tests, tank load tests, and dimensional verification to a micrometer level.

## ENGINEERING SERVICES

### FABRICATION AND WELDING

We have long experience in making pieces that last, in aluminium and steel – and not only for on board ship. We're often asked to make railings, hatches, stairs, ladders, gates and grilles – as well as structural steels, and sheet metal work including ducts, vents and trunking.

### CORROSION PROTECTION

We offer pressure washing and UHP water blasting – achieving a low-salt finish – along with airless paint spraying and priming, coating, grinding, brushing and etching to deliver a flawless result. And if the dock needs to be enclosed and climate-controlled, it's not a problem, so a yacht standard finish is achievable.

### MACHINING

Our machine shop is fully equipped with lathes, slotting and drilling machines, and a large milling table. We regularly machine and fit precision parts like bearings and cylinder heads, for both seagoing and land-based duties.

### MULTI-SKILLED SUPPORT

To save you the expensive headache of looking for the right local contractors, our support services can cover everything from carpentry, upholstery and electronics to forklift operations and waste management. Or you're welcome to use your own preferred suppliers.



**YachtProjectsInternational**

[www.yachtprojects.net](http://www.yachtprojects.net)